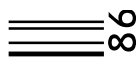


Fight No.	Blue	Red	Hugo/Heat	Division
101	Miles Johnson	Martin Olvera	1/11	580, Olympic 12-14 BLACK -72.8 lbs Male
102	Aubakir Yermekbayev	Charles Lee	1/11	580, Olympic 12-14 BLACK -72.8 lbs Male
103	Kevin Pereda	Fabio Tamay	1/12	581, Olympic 12-14 BLACK 72.9-81.6 lbs Male
104	Markus Lugo	Christopher Yoon	1/12	581, Olympic 12-14 BLACK 72.9-81.6 lbs Male
105	Rodney Howard	James Noyes	2/13	582, Olympic 12-14 BLACK 81.7-90.4 lbs Male
106	Melissa Tagorda	Katelyn Cruz	1/10	605, Olympic 12-14 BLACK -63.9 lbs Female
107	Charles Lee	Martin Olvera	1/11	580, Olympic 12-14 BLACK -72.8 lbs Male
108	Miles Johnson	Aubakir Yermekbayev	1/11	580, Olympic 12-14 BLACK -72.8 lbs Male
109	Christopher Yoon	Fabio Tamay	1/12	581, Olympic 12-14 BLACK 72.9-81.6 lbs Male
110	Kevin Pereda	Markus Lugo	1/12	581, Olympic 12-14 BLACK 72.9-81.6 lbs Male
111	James Noyes	Christopher Allen	2/13	582, Olympic 12-14 BLACK 81.7-90.4 lbs Male
112	Katelyn Cruz	Emily Rodriguez	1/10	605, Olympic 12-14 BLACK -63.9 lbs Female
113	Ty Billings	Jonathan Otero	2/14	583, Olympic 12-14 BLACK 90.5-99.2 lbs Male
114	Aubakir Yermekbayev	Martin Olvera	1/11	580, Olympic 12-14 BLACK -72.8 lbs Male
115	Charles Lee	Miles Johnson	1/11	580, Olympic 12-14 BLACK -72.8 lbs Male
116	Jonathan Otero	Sean Laloan	2/14	583, Olympic 12-14 BLACK 90.5-99.2 lbs Male
117	Markus Lugo	Fabio Tamay	1/12	581, Olympic 12-14 BLACK 72.9-81.6 lbs Male
118	Christopher Yoon	Kevin Pereda	1/12	581, Olympic 12-14 BLACK 72.9-81.6 lbs Male
119	Sean Laloan	Ty Billings	2/14	583, Olympic 12-14 BLACK 90.5-99.2 lbs Male
120	Christopher Allen	Rodney Howard	2/13	582, Olympic 12-14 BLACK 81.7-90.4 lbs Male
121	Emily Rodriguez	Melissa Tagorda	1/10	605, Olympic 12-14 BLACK -63.9 lbs Female
201	Maikol Rodriguez	Philip Davis	2/15	584, Olympic 12-14 BLACK 99.3-108.0 lbs Male
202	Jaden Baxter	Jose Mari Cueto	2/15	584, Olympic 12-14 BLACK 99.3-108.0 lbs Male
203	Lucas Fazekas	Anthony Ly	3/16	585, Olympic 12-14 BLACK 108.1-116.8 lbs Male
204	Dante Leanda	Matthew Mancuso	3/16	585, Olympic 12-14 BLACK 108.1-116.8 lbs Male
205	Cory Dong	Ashlee Rowzer	1/11	606, Olympic 12-14 BLACK 64.0-72.8 lbs Female
207	Jose Mari Cueto	Philip Davis	2/15	584, Olympic 12-14 BLACK 99.3-108.0 lbs Male
208	Maikol Rodriguez	Jaden Baxter	2/15	584, Olympic 12-14 BLACK 99.3-108.0 lbs Male
209	Matthew Mancuso	Anthony Ly	3/16	585, Olympic 12-14 BLACK 108.1-116.8 lbs Male
210	Lucas Fazekas	Dante Leanda	3/16	585, Olympic 12-14 BLACK 108.1-116.8 lbs Male
211	Ashlee Rowzer	Nina Venegas	1/11	606, Olympic 12-14 BLACK 64.0-72.8 lbs Female
213	Bryson Chen	Jose Grullon	3/17	586, Olympic 12-14 BLACK 116.9-125.7 lbs Male
214	Jaden Baxter	Philip Davis	2/15	584, Olympic 12-14 BLACK 99.3-108.0 lbs Male
215	Jose Mari Cueto	Maikol Rodriguez	2/15	584, Olympic 12-14 BLACK 99.3-108.0 lbs Male
216	Jose Grullon	Jiwoo Chung	3/17	586, Olympic 12-14 BLACK 116.9-125.7 lbs Male
217	Dante Leanda	Anthony Ly	3/16	585, Olympic 12-14 BLACK 108.1-116.8 lbs Male
218	Matthew Mancuso	Lucas Fazekas	3/16	585, Olympic 12-14 BLACK 108.1-116.8 lbs Male
219	Jiwoo Chung	Bryson Chen	3/17	586, Olympic 12-14 BLACK 116.9-125.7 lbs Male
220	Nina Venegas	Cory Dong	1/11	606, Olympic 12-14 BLACK 64.0-72.8 lbs Female
301	Nelly Yspango	Sachiko Moore	1/12	607, Olympic 12-14 BLACK 72.9-81.6 lbs Female
302	Kylie Lewis	Saniya Carrillo	1/12	607, Olympic 12-14 BLACK 72.9-81.6 lbs Female
303	So'mora Knight	Isabella Amador	2/13	608, Olympic 12-14 BLACK 81.7-90.4 lbs Female
304	Madison Cobb	Caitlin Nguyen	2/13	608, Olympic 12-14 BLACK 81.7-90.4 lbs Female
305	Priscila Salazar	Sofia Shumsky	2/14	609, Olympic 12-14 BLACK 90.5-97.0 lbs Female
306	Nichole Joglar	Sreeja Sengupta	2/14	609, Olympic 12-14 BLACK 90.5-97.0 lbs Female
307	Saniya Carrillo	Sachiko Moore	1/12	607, Olympic 12-14 BLACK 72.9-81.6 lbs Female
308	Nelly Yspango	Kylie Lewis	1/12	607, Olympic 12-14 BLACK 72.9-81.6 lbs Female
309	Caitlin Nguyen	Isabella Amador	2/13	608, Olympic 12-14 BLACK 81.7-90.4 lbs Female
310	So'mora Knight	Madison Cobb	2/13	608, Olympic 12-14 BLACK 81.7-90.4 lbs Female
311	Sreeja Sengupta	Sofia Shumsky	2/14	609, Olympic 12-14 BLACK 90.5-97.0 lbs Female
312	Priscila Salazar	Nichole Joglar	2/14	609, Olympic 12-14 BLACK 90.5-97.0 lbs Female
313	Griffin Peters	Devin Lee	3/18	587, Olympic 12-14 BLACK 125.8-134.5 lbs Male
314	Kylie Lewis	Sachiko Moore	1/12	607, Olympic 12-14 BLACK 72.9-81.6 lbs Female
315	Saniya Carrillo	Nelly Yspango	1/12	607, Olympic 12-14 BLACK 72.9-81.6 lbs Female
316	Devin Lee	Noah Shanafelt	3/18	587, Olympic 12-14 BLACK 125.8-134.5 lbs Male
317	Madison Cobb	Isabella Amador	2/13	608, Olympic 12-14 BLACK 81.7-90.4 lbs Female
318	Caitlin Nguyen	So'mora Knight	2/13	608, Olympic 12-14 BLACK 81.7-90.4 lbs Female
319	Noah Shanafelt	Griffin Peters	3/18	587, Olympic 12-14 BLACK 125.8-134.5 lbs Male
320	Nichole Joglar	Sofia Shumsky	2/14	609, Olympic 12-14 BLACK 90.5-97.0 lbs Female
321	Sreeja Sengupta	Priscila Salazar	2/14	609, Olympic 12-14 BLACK 90.5-97.0 lbs Female
401	Kristina Teachout	Sierra Altizer	2/15	610, Olympic 12-14 BLACK 97.1-103.6 lbs Female
402	Kyla Allen	Natalie Velazquez	2/15	610, Olympic 12-14 BLACK 97.1-103.6 lbs Female
403	Tyler Glover	Sharon Vera	2/16	611, Olympic 12-14 BLACK 103.7-112.4 lbs Female
405	Gianna Vega	Elizabeth Cavanagh	3/17	612, Olympic 12-14 BLACK 112.5-121.3 lbs Female
406	Jennifer Raiz	Dayanara Alcaraz	3/17	612, Olympic 12-14 BLACK 112.5-121.3 lbs Female
407	Natalie Velazquez	Sierra Altizer	2/15	610, Olympic 12-14 BLACK 97.1-103.6 lbs Female
408	Kristina Teachout	Kyla Allen	2/15	610, Olympic 12-14 BLACK 97.1-103.6 lbs Female
409	Sharon Vera	Amelia Davis	2/16	611, Olympic 12-14 BLACK 103.7-112.4 lbs Female
410	Julian Basalatan	Joseph Dunk	4/20	589, Olympic 12-14 BLACK 143.4-999.0 lbs Male



Team Trials 2018

Fight No.	Blue	Red	Hugo/Heat	Division
411	Dayanara Alcaraz	Elizabeth Cavanagh	3/17	612, Olympic 12-14 BLACK 112.5-121.3 lbs Female
412	Gianna Vega	Jennifer Raiz	3/17	612, Olympic 12-14 BLACK 112.5-121.3 lbs Female
414	Kyla Allen	Sierra Altizer	2/15	610, Olympic 12-14 BLACK 97.1-103.6 lbs Female
415	Natalie Velazquez	Kristina Teachout	2/15	610, Olympic 12-14 BLACK 97.1-103.6 lbs Female
417	Amelia Davis	Tyler Glover	2/16	611, Olympic 12-14 BLACK 103.7-112.4 lbs Female
420	Jennifer Raiz	Elizabeth Cavanagh	3/17	612, Olympic 12-14 BLACK 112.5-121.3 lbs Female
421	Dayanara Alcaraz	Gianna Vega	3/17	612, Olympic 12-14 BLACK 112.5-121.3 lbs Female
501	Brianne Usserman	Madison Yan	3/18	613, Olympic 12-14 BLACK 121.4-130.1 lbs Female
502	Rachael Oquendo	Cheyenne Wright	3/18	613, Olympic 12-14 BLACK 121.4-130.1 lbs Female
503	Natalie Hershberger	Madison Yan	3/18	613, Olympic 12-14 BLACK 121.4-130.1 lbs Female
504	Gianmarco Giambi	Mrigayu Ghosh	3/19	588, Olympic 12-14 BLACK 134.6-143.3 lbs Male
505	Lily Landstrom	Riley King	3/19	614, Olympic 12-14 BLACK 130.2-999.0 lbs Female
506	Samara Obot	Lauren Larocca	3/19	614, Olympic 12-14 BLACK 130.2-999.0 lbs Female
507	Brianne Usserman	Rachael Oquendo	3/18	613, Olympic 12-14 BLACK 121.4-130.1 lbs Female
508	Cheyenne Wright	Madison Yan	3/18	613, Olympic 12-14 BLACK 121.4-130.1 lbs Female
509	Mrigayu Ghosh	Isaac Robles	3/19	588, Olympic 12-14 BLACK 134.6-143.3 lbs Male
510	Lauren Larocca	Riley King	3/19	614, Olympic 12-14 BLACK 130.2-999.0 lbs Female
511	Lily Landstrom	Samara Obot	3/19	614, Olympic 12-14 BLACK 130.2-999.0 lbs Female
512	Brianne Usserman	Natalie Hershberger	3/18	613, Olympic 12-14 BLACK 121.4-130.1 lbs Female
513	Rachael Oquendo	Madison Yan	3/18	613, Olympic 12-14 BLACK 121.4-130.1 lbs Female
514	Isaac Robles	Gianmarco Giambi	3/19	588, Olympic 12-14 BLACK 134.6-143.3 lbs Male
515	Samara Obot	Riley King	3/19	614, Olympic 12-14 BLACK 130.2-999.0 lbs Female
516	Natalie Hershberger	Cheyenne Wright	3/18	613, Olympic 12-14 BLACK 121.4-130.1 lbs Female
517	Cheyenne Wright	Brianne Usserman	3/18	613, Olympic 12-14 BLACK 121.4-130.1 lbs Female
518	Lauren Larocca	Lily Landstrom	3/19	614, Olympic 12-14 BLACK 130.2-999.0 lbs Female
519	Rachael Oquendo	Natalie Hershberger	3/18	613, Olympic 12-14 BLACK 121.4-130.1 lbs Female