

AAU Referee's Test 2017-2018

1- When players are penalized at a stoppage of play so as to result in one or more penalties being placed on the penalty time clock to one team, the ensuing face-off shall be conducted at one of the two face-off spots in the _____ team's end zone.

- A- offending
- B- Defending
- C- Center

2- When one player receives a major penalty and a minor penalty at the same time, the major penalty shall be served first by the penalized player :

- A- True
- B- False

3- An automatic _____ shall be applied to any player who has been assessed a second major penalty in the same game

- A- EJ
- B- Misconduct
- C- Two(2) Minor
- D- Game Misconduct

4- A game ejection penalty involves the removal of a player for the balance of the game but a substitute is permitted to replac immediately the player so removed. A total of _____ () minutes shall be charged in the records on the Official Game Report against the offending player.

- A- Two (2)
- B- Ten (10)
- C- Five (5)
- D- Four (4)

5- Team B is assessed a minor penalty at the 5:00 min mark and Team A is assessed a minor penalty at 4:00. Team A scores at 2:59 min mark. What would be the strength on the floor at the time of the goal.

- A- 3 on 3
- B- 4 on 4
- C- 4 on 3

6- Clock Time	Team A	Team B
5:00	A1-5	
4:30	A2-2	
3:00		Goal

- A-Player A1 returns
- B- Player A1 first minor terminates
- C-Substitute for A1 returns
- D-Play A2 return
- E-No penalty may be terminated

7- A major plus a game misconduct or a match penalty must be assessed in every instance where an injury results from body check.

- A-True
- B-False

8- The ensuing face off location after the puck is shot off the crossbar and out of play by the attacking team in the attacking zone is the attacking zone face-off spot.

- A- True
- B- False

9- Team A # 2 gets a major + GM at 6:40 and Team A scores at 3:30 on the face off what is the strength on the face off.

- A- 4 on 4
- B- 2 on 3
- C- 4 on 3
- D- 4 on 2

10- A Game misconduct penalty shall be imposed on a player who throws his stick or any part there of or any other object or piece of equipment outside the playing area.

- A-True
- B – False

11-When a player carries or holds any part of his stick above the shoulders of the opponent so that injury results, the Referee shall assess a _____ penalty plus a game misconduct for all contact that causes an injury, whether accidental or careless, in the opinion of the Referee.

- A- Double Minor
- B- EJ
- C- Major
- D- Minor

12-A “pick” is the action of a player who checks or otherwise illegally prohibits the movement of an opponent who is not in possession of the puck. A player delivering a “pick” is one who moves into an opponent’s path without initially having body position, thereby taking him out of the play. When this is done, an _____ penalty shall be assessed.

- A- Roughing
- B- Game Misconduct
- C- Interference
- D- Double Minor
- E- All the above

13- A minor penalty shall be imposed on a player who attempts to draw a penalty by his actions (“diving / embellishment”), regardless of whether or not a penalty is assessed to his opponent.

- a. True
- b. False

14- Game ejection penalties shall be assessed under this rule for the following infractions:

A-Any player who persists in any course of conduct for which he was previously assessed a misconduct penalty under this Rule.

B- Any coach or non-playing Club official who persists in any course of conduct for which he was previously assessed a bench minor penalty.

C-Anyplayer who receives three (3) penalties of any kind (except misconduct penalty) in the same game.

D-All the above

15- When a stoppage of play has been caused by any player of the attacking side in the attacking zone, the ensuing face-off shall be made at the center face-off spot.

- A-True
- B-False

16-When at least two face-off violations have been committed by the same team during the same face-off, this team shall be penalized with a minor penalty to the offending player. This penalty shall be announced as a _____ Penalty for Delay of Game–Face-off Violation.

- A-Major
- B-Minor
- C- EJ
- D- Double Minor

17- If a goal is scored as a result of being deflected directly into the net off an official, the goal _____.

- A- Be Allowed
- B- Not be Allowed
- C- Penalty shot will be awarded

18- No one but players on the game roster and in complete uniform and a maximum of _____ non-playing team personnel duly registered and certified with USARS for the current season, such as Managers, Coaches, Trainers, Equipment Managers, etc. shall be permitted to occupy the players' benches so provided.

- A- Five (5)
- B- Two (2)
- C- Three (3)
- D- As many as they want

19-If a goalkeeper sustains an injury or becomes ill, he must be ready to resume play immediately or be replaced by a substitute goalkeeper and no additional time shall be allowed by the Referee for the purpose of enabling the injured or ill goalkeeper to resume his position. warm-up shall be permitted for a substitute goalkeeper.

- A-True
- B-False

20-No inserts or additions are to be added to the standard players' jersey as produced by the manufacturer

- A-True
- B-False

21- Team A # 6 gets 5 + GM, A # 4 gets 5 + 2 Team B # 9 gets 5 + GM Team B # 2 gets 5 + 2 + GM all at 4 min on the clock, what is the manpower when the game resumes?

- A-3 on 2 Team A
- B-4 on 2 Team B
- C-4 on 4
- D-3 on 2 Team B

22- <u>Clock Time</u>	<u>Team A</u>	<u>Team B</u>
5:00	A1-2+2	
4:30		B1-2
2:50		Goal

- A-Player A1 returns
- B- Player A1 first minor terminates
- C-Substitute for A1 returns
- D-No penalty may be terminated

23-A team may change goalkeepers to defend against a penalty shot.

- A-True
- B-False

24- If an attacking player initiates contact with a goalkeeper, incidental or otherwise, while the goalkeeper is in his goal crease, and a goal is scored, the goal will be _____.

- A-Allowed
- B-Allowed and a penalty will be given
- C-Disallowed

25-Goal Scored - If the penalty to be imposed is a minor penalty and a goal is scored on the play by the non-offending side, the minor penalty shall not be _____.

- A- Imposed
- B- Not Imposed

26- Goal Scored - When the penalty to be imposed is applicable under **Rule 55 – Butt-ending or Rule 59 – Spearing**, and a goal is scored, only two minutes of the appropriate penalty will be served by

the offending player. (This will be announced and reported on the Official Game Report as a double-minor for the appropriate foul but the player will serve two (2) minutes only.)

- A- True
- B- False

27-In addition to the match penalty, the player shall be automatically suspended from further competition until the Disciplinary Committee has ruled on the issue.

- A-True
- B-False

28-Any player that receives _____penalties of any kind (except for misconduct penalties) in a single game shall automatically be assessed a game ejection penalty.

- A- Two(2)
- B- Four(4)
- C- Five(5)
- D- Three(3)

29- Team B player receives a minor penalty 3:00 min mark, and Team A gets a minor penalty at 2:00 mark, a goal is scored by Team B at 0:50 mark, what is the strength on the floor at the face off?

- A- 3 on 3
- B- 4 on 4
- C- 4on 3

30-Any player assessed a game misconduct shall also be assessed an automatic _____ game suspension, to be served in the immediate next game already listed on the team schedule

- A-5
- B-2
- C-1

31-Should the goalkeeper leave his crease prior to the player taking the penalty shot has touched the puck, and in the event of violation of this rule or any foul committed by a goalkeeper, the Referee shall allow the shot to be taken and if the shot fails, he shall permit the penalty shot to be taken over again. When an infraction worthy of a minor penalty is committed by the goalkeeper during the penalty shot that causes the shot to fail, no penalty is to be assessed but the Referee shall permit the shot to be taken over again. Should a goalkeeper commit a second violation during the penalty shot and the shot fails, he shall be assessed a misconduct penalty and the Referee shall award an automatic goal.

- A- True
- B- False

32-If a third player of any team shall be penalized while two players of the same team are serving penalties, the penalty time of the third player shall not commence until the penalty time of one of the two players already penalized has elapsed. Nevertheless, the third penalized player must at once proceed to the penalty bench. He may be substituted for on the rink so as to keep the on-rink strength at _____ skaters for his team.

- A-no less than one
- B-no less than three
- C-no less than two

33-A minor penalty shall be imposed on a goalkeeper who leaves the immediate vicinity of his crease during an altercation.

- A-Major
- B-Minor
- C-EJ

34-A _____ penalty shall be imposed on any player who checks an opponent in such a manner that causes the opponent to be thrown violently in the boards. The severity of the penalty, based upon the degree of violence of the impact with the boards, shall be at the discretion of the Referee.

- A-EJ
- B-Match
- C-Roughing
- D-Boarding

35-The Referee, at his discretion, may assess a _____ penalty if, in his judgment, the player attempted to or deliberately injured his opponent by boarding.

- A-EJ
- B- Game Misconduct
- C- Match
- D- Double Minor

36-A minor penalty shall be imposed on a player who interferes with or impedes the progress of an opponent who is not in possession of the puck.

- A- Minor
- B- Major
- C- EJ

37- A minor penalty shall be imposed on a player who restrains an opponent who is attempting to “fore-check.”

- A- True
- B- False

38- A minor penalty shall be imposed on any player who shall place his stick or any portion of his body in such a manner that it shall cause his opponent to trip and fall.

- A-True
- B- False

39-A game ejection penalty involves the removal of a player for the balance of the game but a substitute is permitted to replace immediately the player so removed. A total of Five (5) minutes shall be charged in the records on the Official Game Report against the offending player.

- a- True
- b- False

40-Player A on RED was assessed a penalty in the first period for high-sticking. In the third period, Player A on RED runs into Player B on BLUE against the boards and deserves a boarding penalty. Before RED team can touch the puck, player A also trips Player B after they got up to go after the puck. What happens next?

- A. The play continues until RED touches the puck
- B. You blow the whistle immediately because Player A now will be given (2) minor penalties
- C. Player A should receive a Game Ejection Penalty, (10) minute and removed from the game
- D. A and C
- E. B and C

41- Any non-playing coach or manager who gets on the floor after the start of the game without permission of the referee shall be removed from the game and assessed a _____.

- A-Double minor
- B-Major
- C-Bench Minor
- D-Misconduct

42- Whenever the Referee stops play to disallow a goal as a result of contact with the goalkeeper (incidental or otherwise), the resulting face-off shall take place at _____spot

- A-Attacking face-off
- B-Defending face-off
- C-Center Face-off

43- Team A # 2 gets 5 + GM Team B # 9 gets 5 + GM, what is the man power when the game resumes?

- A-3 on 3
- B- 4 on 4
- C-4 on 3 Team B
- D-4 on 3 Team A

44-Team A # 6 gets a major + GM at 6:40 and Team A scores at 3:30 on the face off what is the strength on the face off.

- A-4 on 4
- B-2 on 3
- C-4 on 3
- D-4 on 2

45- using question 44 what time does Team A # 6 get out of the box.

- A-1:40
- B-4:40
- C-5:40
- D-3:30

46-A minor penalty shall be imposed on any player, including the goalkeeper, who holds, freezes, or plays the puck with his stick, skates, or body in such a manner as to deliberately cause a stoppage of play.

- A-True
- B-False

47-If the goal post is deliberately displaced by a goalkeeper or player during the course of a “breakaway,” or when the minor penalty for delay of game cannot be served in its entirety in regulation time or at any point in overtime, a _____ will be awarded to the non-offending team.

- A- Major
- B- Penalty shot
- C- Minor

48-When a player contacts the puck with his stick above the normal height of the shoulders and a teammate elects not to play the puck to avoid the stoppage of play, and the opposing team also abstains from playing the puck (perhaps to allow time to expire on a penalty), the Referee shall stop the play and order the resulting face-off at the last-play face-off location nearest to where the play was stopped for this violation.

- A-True
- B- False

49-During the second period, the score clock malfunctions and completely stops working. What should happen?

- A. Play should stop immediately and if the game clock is inoperable the game is halted and rescheduled.
- B. Play should stop immediately and then resume with the game clock operator keeping time on a cell phone or stopwatch for the remainder of the game.

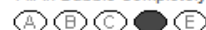
50-Player A is on the ground near his own team’s goal line as the puck moves to the opposite end of the rink, he is being called off the rink by his coach, when he gets up to start skating toward the bench, the coach sends a replacement player on the rink to try to score. This should be a penalty for “too many men”? T or F

- A- True
- B- False

test score - do not mark in this box

2017-18 Officials Test

Choose the Best Answer.
Fill-in Bubble Completely.



Name: _____ Date: _____

1. A B C D E

2. A B C D E

3. A B C D E

4. A B C D E

5. A B C D E

6. A B C D E

7. A B C D E

8. A B C D E

9. A B C D E

10. A B C D E

11. A B C D E

12. A B C D E

13. A B C D E

14. A B C D E

15. A B C D E

16. A B C D E

17. A B C D E

18. A B C D E

19. A B C D E

20. A B C D E

21. A B C D E

22. A B C D E

23. A B C D E

24. A B C D E

25. A B C D E

26. A B C D E

27. A B C D E

28. A B C D E

29. A B C D E

30. A B C D E

31. A B C D E

32. A B C D E

33. A B C D E

34. A B C D E

35. A B C D E

36. A B C D E

37. A B C D E

38. A B C D E

39. A B C D E

40. A B C D E

41. A B C D E

42. A B C D E

43. A B C D E

44. A B C D E

45. A B C D E

46. A B C D

47. A B C D

48. A B C D

49. A B C D

50. A B C D